
“STUDY OF CHHOTA-UDAIPUR DISTRICT -GUJARAT WITH REFERENCE TO PROFITABILITY OF SELECTED DOLOMITE MINERAL INDUSTRIES”

Mr. Maheshkumar C. Rathava
Associate Professor of Commerce

J.L.K. Kotecha Arts and Smt. S.H. Gardi Commerce College, Kakankpur

ABSTRACT

Dolomite is one kind of mineral which is available in eastern part of Gujarat. That is known as chhota-Udaipur district (Totally Tribal Area). In this district more than 124 MSME industries working on making various products from dolomite minerals. Research would like to focus on dolomite industries various problem and prospectus from its stake holder like Factory holders, Industrialist, worker, local community, lease holder and society at large. It is mainly focus on profitability of dolomite industries. This paper contains points like About Dolomite, About Chhota Udaipur District, The Problem Area, Significant the Study, Objectives of the study, Uses of Dolomite Mineral, Universe of the Study and Sample Design, Research Instrument, Data Analysis and Presentation, Limitations of Study, Testing of Hypothesis, Interpretations and Conclusion followed by references.

KEY WORDS: Dolomite Mineral, Profitability and Tribal Area

INTRODUCTION

Introduction contains about two major points of this research paper i.e. about dolomite and about chhota-udaipur district. Details are given below in this regards.

ABOUT DOLOMITE

Most probably the mineral dolomite was first described by Carl Linnaeus in 1768. In 1791, it was described as a rock by the French naturalist and geologist Deodat Gratet de dolomieu (1750–1801), first in buildings of the old city of Rome, and later as samples collected in the mountains now known as the Dolomite Alps of northern Italy. Nicolas-Theodore de Saussure first named the mineral (after Dolomieu) in March 1792. Dolomite, and marble -the carbonate rocks - are the principal karst-forming rocks. Karst is a type of topography that is formed on limestone, gypsum, and other rocks by dissolution that is characterized by sinkholes, caves, and underground drainage regions. Karst areas constitute about 10 percent of the land surface of the world.

ABOUT CHHOTA UDAIPUR DISTRICT

Chhota Udaipur district (also Chhota Udepur district) is a district in the state of Gujarat in India. It was carved out of the Vadodara district on 26 January 2013 with its headquarters at Chhota Udaipur town and is the 28th district of Gujarat. Chhota Udaipur was the capital of the erstwhile Princely State of Chhota Udaipur, founded in 1743 by Rawal Udeysinhji, a descendant of Patai Rawal of Champaner. This state was

a second class state under Rewa Kantha Agency and merged with the Union of India on March 10, 1948. Aishwarya Pratap sikh Chauhan is the last son of Maharaja Virendra Pratap sikh Chauhan. He is at present the Maharaja of chhota-udaipur. Dolomite mineral is mainly available in Chhota Udaipur District in Gujarat. In chhota Udaipur more than 124 industries presently working of dolomite.

ABOUT SELECTED INDUSTRIES FOR PROFITABILITY STUDY

Table No. 4: List of the selected dolomite Industries for study purpose

Sr. No.	Dolomite Industry Name	Short Name	Village & District
1	Modern Mineral Grinding Industry	MMGI	Runvada, Chhotaudepur, Gujarat
2	Radha Kishan Mineral	RKM	Vanar,, Chhotaudepur, Gujarat
3	Mahalaxmi Micro.	MI. M	Runvada, Chhotaudepur, Gujarat
4	Mahadev Micro.	Md.M	Chhotaudepur, Chhotaudepur, Gujarat
5	Ambica Chips	AC	Vasedi, Chhotaudepur, Gujarat
6	Laxmi Chips & Glass Factory	LCGF	Chotta-udepur, Chhotaudepur, Gujarat
7	Swamikrupa minerals	SM	Vasedi, Chhota Udepur, Gujarat
8	Shri Ram Mineral	SRM	Chotta –Udepur, Chotta –Udepur, Gujarat
9	Akhileshwari Micro Minerals	AMM	Chhota Udepur, Chhota Udepur , Gujarat
10	Bharat Laxmi Minerals Grinding Industry	BLMGI	Runvada, Chhotaudepur, Gujarat

DATA COLLECTION, ANALYSIS, HYPOTHESIS TESTING, INTERPRETATION AND COLLECTION FOLLOWED REFERENCES

Data collection through primary study of above selected 10 dolomite industries

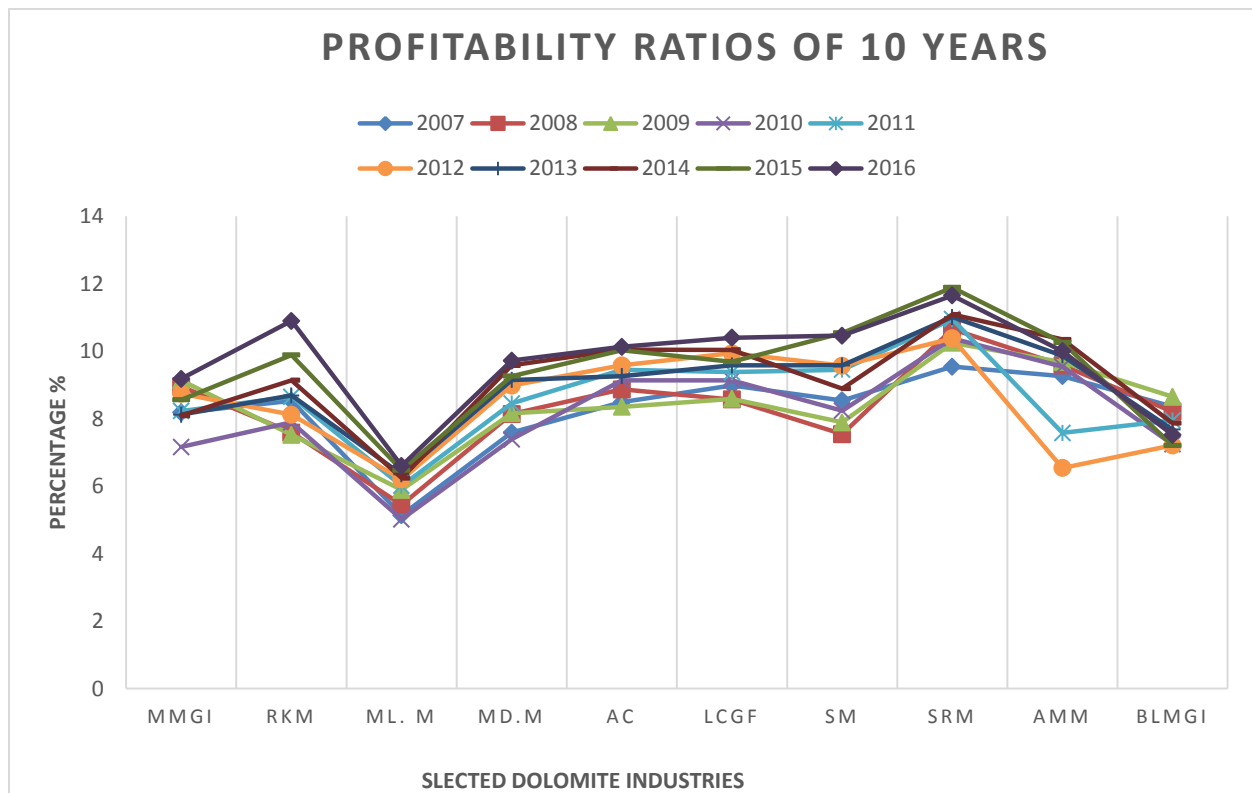
Table No. 2: Last 10 years Profitability ratios data of Selected 10 Dolomite industries

	Profitability ratios (%)									
	Dolomite Industries (1 to 10)									
	1	2	3	4	5	6	7	8	9	10
Year	MMGI	RKM	MI. M	Md.M	AC	LCGF	SM	SRM	AMM	BLMGI
2007	8.18	8.53	5.14	7.59	8.49	8.98	8.54	9.54	9.26	8.36
2008	8.96	7.59	5.45	8.14	8.87	8.57	7.54	10.65	9.58	8.21
2009	9.14	7.52	5.89	8.16	8.35	8.59	7.89	10.25	9.68	8.65
2010	7.16	7.89	5.02	7.39	9.14	9.14	8.24	10.38	9.54	7.24
2011	8.23	8.65	6.01	8.45	9.45	9.38	9.45	10.95	7.58	7.95
2012	8.74	8.12	6.2	8.98	9.58	9.94	9.57	10.38	6.54	7.21
2013	8.12	8.69	6.35	9.15	9.26	9.58	9.58	11.01	9.87	7.68

2014	8.09	9.14	6.24	9.58	10.05	10.04	8.89	11.09	10.35	7.87
2015	8.56	9.89	6.48	9.26	10.03	9.69	10.54	11.89	10.26	7.21
2016	9.18	10.9	6.6	9.72	10.13	10.4	10.46	11.65	10	7.52
Total	84.36	86.92	59.38	86.42	93.35	94.31	90.7	107.79	92.66	77.9
Avg.	8.436	8.692	5.938	8.642	9.335	9.431	9.07	10.779	9.266	7.79

Source: Primarily data collected

Chart No. 1: Last 10 years Profitability ratios data of Selected 10 Dolomite industries



Above table and chart explained the performance of Dolomite industries in last 10 years.

Hypothesis No. 1: Profitability Ratios

- H_0 =Dolomite industries do not have any significant difference in the performance of profitability ratios of last ten years.
- H_1 = Dolomite industries do have any significant difference in the performance of profitability ratios of last ten years.

TESTING OF HYPOTHESIS

Mean X = 8.7379

$$X = \frac{\sum xi}{n} = \frac{87.379}{10} = 8.7379$$

Median N (n+1/2= 6th years observations) = 9.431

Mode Z = 10.779

Mode Z is considering the value of = $\mu = 10.77$

$$H_0 = \mu = 10.7$$

$$H_1 = \mu \neq 10.7$$

xi	8.436	8.692	5.938	8.642	9.335	9.431	9.07	10.779	9.266	8.436	$\sum xi = 87.379$
x (Mean 8.737)	8.737	8.737	8.737	8.737	8.737	8.737	8.737	8.737	8.737	8.737	
di= xi - x (Mean 8.73)	-0.301	-0.045	-2.799	-0.095	0.598	0.694	0.333	2.042	0.529	-0.94	$\sum di = 0.009$
di ²	0.09	0.002	7.83	0.0090	0.35	0.48	0.11	4.16	0.27	0.89	$\sum di^2 = 14.2325$

$$\sum xi = 87.379$$

$$\sum di = 0.009$$

$$\sum di^2 = 14.2325$$

For, t-test **Standard Deviation (S)** is to be find through following formula

$$S^2 = \frac{1}{n} \left\{ \frac{\sum di^2}{n} - \left(\frac{\sum di}{n} \right)^2 \right\}$$

$$S^2 = \frac{1}{10} \left\{ \frac{14.2325}{10} - \frac{(0.009)^2}{10} \right\}$$

$$S^2 = \frac{14.21}{10} \quad S^2 = 1.42 \quad S = 1.19$$

Now, t-test formula

$$t = \frac{|\bar{x} - \mu|}{S} \sqrt{n-1} = \frac{|8.737-10.77|}{1.19} \sqrt{10-1} = \frac{118.369}{1.19} = 15.37$$

t = 15.37

degree of freedom (d.f.) = n-1 = 10-1 = 9

5% level of significant at 9 d.f. = **2.262**

t-Calculatation > t-table
15.37 > 2.262

t-Calculatation value is higher than t-table value

Hence, H₀ is Rejected

H₁ = μ ≠ 10.779

H₁ is Accepted

(t- Table value is taken from statistic table of t -Distribution)

INTERPRETATIONS

Here null hypothesis (H₀) rejected so, alternate hypothesis is accepted i.e. (H₁) dolomite industries do have any significant difference in profitability ratios' performance of last ten years. It shows that all the selected dolomite industry had different and combination every year as far as profit and net sales was concerned. It was very with every year. Industries should try to increase and maintain steady growth of profitability.

CONCLUSION

Researcher had found that Average profitability ratios of selected dolomite industries of last ten years were between 7.79 to 10.77 percentages. For every business profitability is prime motive and these profitability ratios shows moderate performance of industries in compare to other tiny industries. Many tiny industries have 20 to 30 percentage Average profitability ratios. Moreover, from the result of hypothesis testing indicates that dolomite industries do have significant difference in profitability ratios' performance in the last ten years. It shows that all the selected dolomite industry had different and arrangement of sales and profit relations every year. Industries should try to increase and maintain steady growth of profitability.

REFERENCES

- Panshat Meshram. Corporate Governance. Jaipur: Wide Vision Publication, 2005.
- Roberts, J. A., Kenward, P. A., Fowle, D. A., Goldstein, R. H., Gonzalez, L. A., and Moore, D. S. (1980). "Surface chemistry allows for abiotic precipitation of dolomite at low temperature". Proceedings of the National Academy of Sciences of the United States of America.

WEBSITES

- www.shodhganga.org.
- www.mpbcwwb.org
- www.wikipediafree
- www.oman.labour.in.indi.com
- www.alirajpur.nic.in
- www.labourebeuro.com
- www.dolomiot.milesindustries.com